

POND COVE  
PLAYGROUND

TOWN COUNCIL  
PRESENTATION



Let's give our children a space to explore while preparing them to navigate so much more!



[info.pondcoveplayground@gmail.com](mailto:info.pondcoveplayground@gmail.com)  
[www.pondcoveplayground.org](http://www.pondcoveplayground.org)

*The Pond Cove Playground Committee is a non-profit organization founded to lead the Operation Rebuild: Learn, Play, Grow Outside! Campaign. 501(c)(3) tax exemption status is pending. Mailing Address: 9 Spruce Lane, Cape Elizabeth ME, 04107*



The ***Operation Rebuild: Learn, Play, Grow Outside!*** campaign aims to fund the creation & maintenance of a new playground and outdoor classroom at Pond Cove Elementary School.

## PROJECT HISTORY

2014

The current playground has aged equipment, site maintenance challenges and doesn't meet updated safety codes.

2015

Following a community input survey in 2015, a grant funded the design of a nature-based "adventure playspace" by a licensed landscape architect in 2016. State funding cuts prevented the school system from completing the project several years in a row.

2018

In 2018, dedicated parents and school staff launched the Operation Rebuild: Learn, Play, Grow Outside! campaign to bring the project to life! Provided funds can be secured, construction will occur during the 2019 summer break.

## THIS PROJECT WILL BENEFIT OUR ENTIRE TOWN!

Located behind the library in our town center, the new playground will be enjoyed by town families and visitors after school, on weekends, and during school breaks.

## PROJECT PLANS

Our plans embody more than just a new play structure. This project is an opportunity to create a space for outdoor nature-based play and learning for children in our community.

The exciting design includes:

- An upgraded and expanded outdoor classroom, with new raised planting beds, a bird and butterfly garden, and weather observation and compost stations
- Two age-appropriate large play structures, a wooden boat, sand play area, a tree fort, swings, a ping pong alcove, and sports areas
- Accessible features and ADA-compliant fixtures so ALL students can play
- Adventure-play style landscaping throughout the space

## HOW YOU CAN HELP

We are seeking community partners for sponsorships and-kind donations to achieve our fundraising goal of \$300,000. Naming opportunities are available and we look forward to featuring partners on our project website and social media pages.

A natural playground gives kids the chance to wonder, take risks, build confidence, learn via all their senses and practice environmental stewardship. What could be better?

Thank you for considering helping Cape kids learn, play, and grow outside!



Operation Rebuild: Learn, Play, Grow Outside!  
 Pond Cove Playground Committee  
 info.pondcoveplayground@gmail.com  
 www.pondcoveplayground.org

## PROJECTED INCOME

Constituent Category / Source		Amount	Area	Status
Cape Elizabeth Municipal Budget				
	Cape Elizabeth Town Municipal Budget, Initial Grant	\$50,000	General Project Fund	Proposed, Town Council Vote 2/11
	Cape Elizabeth Town Municipal Budget, Matching Grant	\$50,000	Finish / General Project Fund	Proposed, Town Council Vote 2/11
Foundations				
	P W Sprague Memorial Foundation	\$3,000	General Project Fund	Committed
	Lowe's	\$5,000	Big Adventureland Hillside Slide	Requested
	Cape Elizabeth Educational Foundation	\$75,000	Little Adventureland	Requested, CEEF Presentation 2/13
	Cape Elizabeth Land Trust Educational Fund	\$3,000	General Project Fund / Naming Opportunity	Requested
	Pond Cove Parent Association	\$2,500	Natureland Raised Beds	Requested, PCPA Presentation 2/13
	Additional Foundation Grants (Niles, Voya Unsung Heroes, Home Depot, et al)	TBD		In Progress
Cape Elizabeth School Budget				
	Cape Elizabeth School Budget Facilities Line Item FY2019	\$74,000	General Project Fund	Proposed, School Board Presentation 2/26
Corporations				
	Local Business Corporate Sponsorship Outreach (50 local business prospects)	TBD	General Project Fund / Naming Opportunities	In Progress
	Fiddleheads Flowers <i>Flowers For A Cause</i> Partnership	TBD	General Project Fund	Committed
	Local Business Corporate In-Kind Outreach (Tammara, LP Murray, Beachstone Sustainable Products, Drillens Hardware et al)	TBD	Material Donation	In Progress
Event Income				
	Community Event Revenue, Piano Men Kick-off Benefit Concert	2,000	General Project Fund	Received
	Elsmere Non-Profit Night	TBD	General Project Fund	In Progress, 2/27
	Community Event Revenue (Pond Cove's Got Talent Show, et al )	TBD	General Project Fund	In Progress, Spring 2019
Individuals				
	Individual Campaign (Major Donor Tiers Program)	TBD	General Project Fund / Naming Opportunities	In Progress
	Individual Campaign (Family Handprint Tile / Paver Program)	TBD	General Project Fund	Coming Spring 2019
<b>Total</b>		<b>\$264,500</b>		

## PROJECT EXPENSES

Area	Amount
Natureland ( <i>Natural Free Play Area + Extended Outdoor Learning: Outdoor Classroom &amp; Bird and Butterfly Garden</i> )	\$50,000
Little Adventureland ( <i>K-2 Adventure Play Area, Sand &amp; Boat Area ,Hillside Slide, Omnispinner, Swings</i> )	\$75,000
Big Adventureland ( <i>Grades 3-4 Adventure Play Area, Nest Swing, Grassy Field, Tree Fort, Basketball Courts, Breezeway Playspace</i> )	\$140,000
General Nature-Play Landscaping ( <i>Bark Mulch Paths, Log Edging, Hardy Play Shrubs, Willow Tree, Stone Steps</i> )	\$10,000
Maintenance Fund ( <i>Contract will reference Architect's Maintenance Plan</i> )	\$25,000
<b>Total</b>	<b>\$300,000</b>

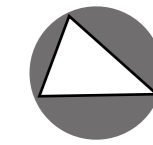






CONCEPT PLAN

POND COVE ELEMENTARY SCHOOL  
PLAYGROUND

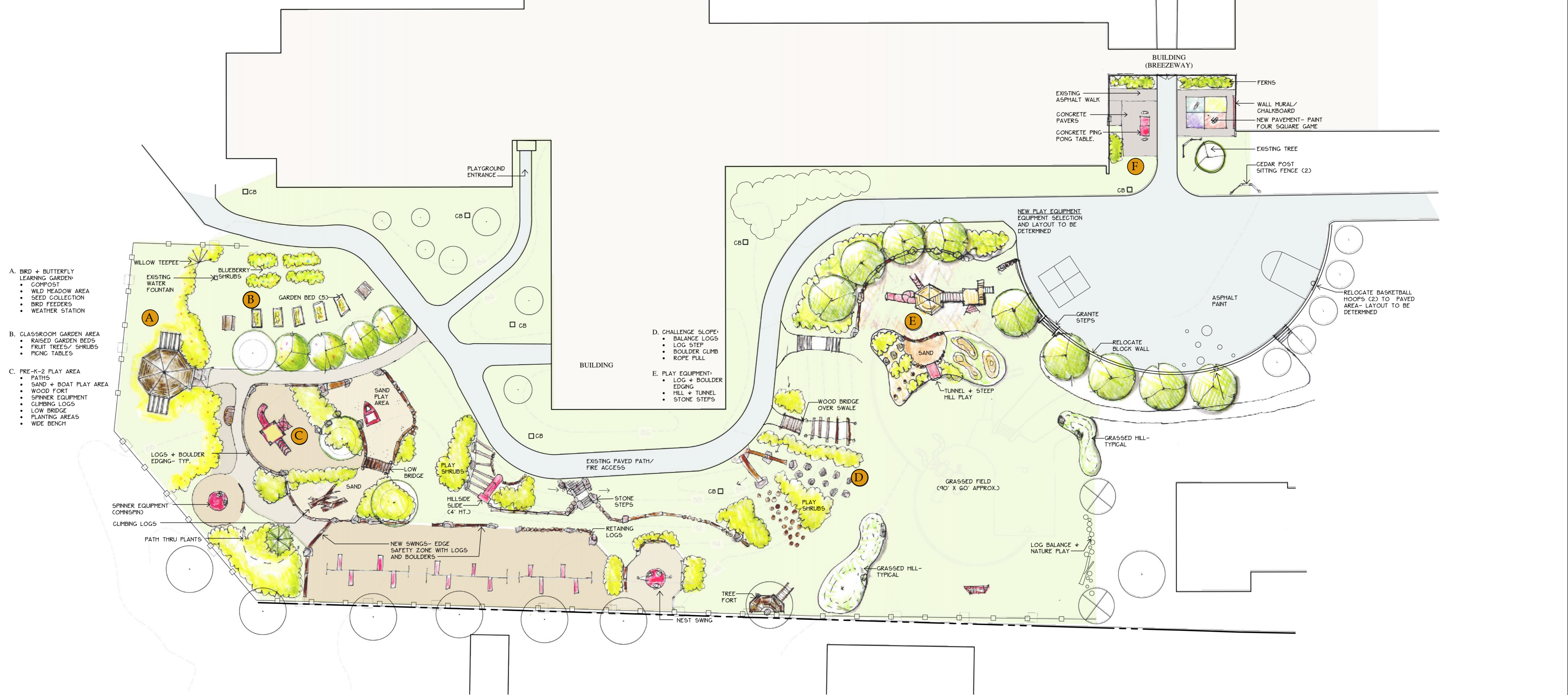


NORTH  
SCALE: 1"=20'

PREPARED BY:  
SASHIE MISNER  
ME LICENSED LANDSCAPE ARCHITECT

KEY- PLAN FEATURES

- A. BIRD & BUTTERFLY LEARNING GARDEN
- B. CLASSROOM GARDEN AREA
- C. PRE-K-2 PLAY AREA
- D. CHALLENGE SLOPE
- E. PLAY EQUIPMENT
- F. TEEN PLAY AREA



- A. BIRD & BUTTERFLY LEARNING GARDEN:
  - COMPOST
  - WILD MEADOW AREA
  - SEED COLLECTION
  - BIRD FEEDERS
  - WEATHER STATION
- B. CLASSROOM GARDEN AREA:
  - RAISED GARDEN BEDS
  - FRUIT TREES/ SHRUBS
  - PICNIC TABLES
- C. PRE-K-2 PLAY AREA:
  - PATHS
  - SAND + BOAT PLAY AREA
  - WOOD FORT
  - SPINNER EQUIPMENT
  - CLIMBING LOGS
  - LOW BRIDGE
  - PLANTING AREAS
  - WIDE BENCH

- D. CHALLENGE SLOPE:
  - BALANCE LOGS
  - LOG STEP
  - BOULDER CLIMB
  - ROPE FULL
- E. PLAY EQUIPMENT:
  - LOG + BOULDER EDGING
  - HILL + TUNNEL
  - STONE STEPS

BUILDING (BREEZEWAY)

- EXISTING ASPHALT WALK
- CONCRETE PAVERS
- CONCRETE PING PONG TABLE
- FERNS
- WALL MURAL/ CHALKBOARD
- NEW PAVEMENT - PANT FOUR SQUARE GAME
- EXISTING TREE
- CEDAR POST SITTING FENCE (2)

NEW PLAY EQUIPMENT EQUIPMENT SELECTION AND LAYOUT TO BE DETERMINED

- GRANITE STEPS
- RELOCATE BASKETBALL HOOPS (2) TO PAVED AREA - LAYOUT TO BE DETERMINED
- RELOCATE BASKETBALL HOOPS (2) TO PAVED AREA - LAYOUT TO BE DETERMINED

GRASSED FIELD (90' X 60' APPROX.)

LOG BALANCE + NATURE PLAY

NEST SWING

TREE FORT

NEW SWINGS - EDGE SAFETY ZONE WITH LOGS AND BOULDERS

RETAINING LOGS

HILLSIDE SLIDE (4' HT.)

PLAY SHRUBS

LOW BRIDGE

SAND PLAY AREA

GARDEN BED (5)

BLUEBERRY SHRUBS

EXISTING WATER FOUNTAIN

WILLOW TEEPEE

LOGS + BOULDER EDGING - TYP.

SPINNER EQUIPMENT COMPSPND

CLIMBING LOGS

PATH THRU PLANTS

PLAYGROUND ENTRANCE

BUILDING (BREEZEWAY)

EXISTING ASPHALT WALK

CONCRETE PAVERS

CONCRETE PING PONG TABLE

FERNS

WALL MURAL/ CHALKBOARD

NEW PAVEMENT - PANT FOUR SQUARE GAME

EXISTING TREE

CEDAR POST SITTING FENCE (2)

NEW PLAY EQUIPMENT EQUIPMENT SELECTION AND LAYOUT TO BE DETERMINED

GRANITE STEPS

RELOCATE BASKETBALL HOOPS (2) TO PAVED AREA - LAYOUT TO BE DETERMINED

RELOCATE BASKETBALL HOOPS (2) TO PAVED AREA - LAYOUT TO BE DETERMINED

SAND

TUNNEL + STEEP HILL PLAY

WOOD BRIDGE OVER SWALE

PLAY SHRUBS

GRASSED HILL - TYPICAL

GRASSED HILL - TYPICAL

GRASSED HILL - TYPICAL

GRASSED HILL - TYPICAL

GRASSED HILL - TYPICAL

GRASSED HILL - TYPICAL

GRASSED HILL - TYPICAL

GRASSED HILL - TYPICAL

GRASSED HILL - TYPICAL

GRASSED HILL - TYPICAL

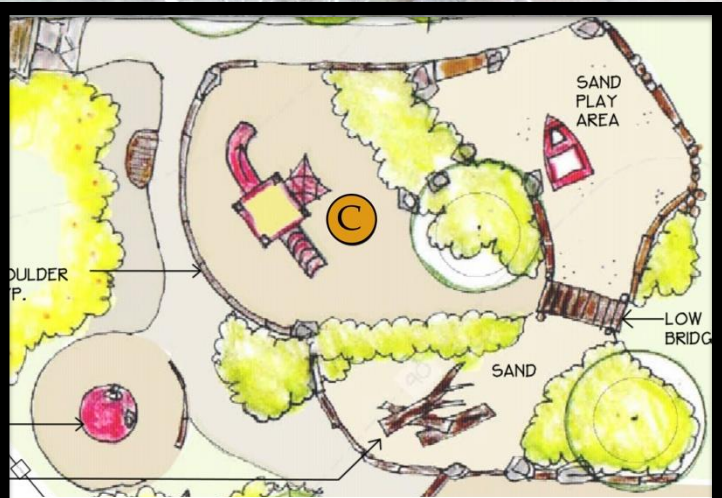
GRASSED HILL - TYPICAL

GRASSED HILL - TYPICAL



# Natureland – Outdoor Classroom





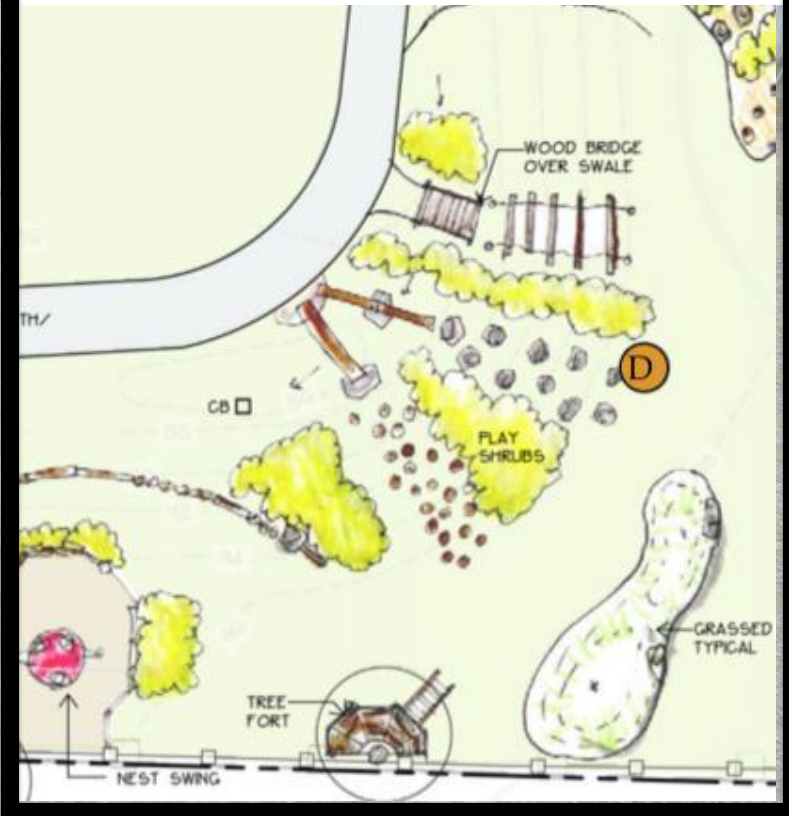
Little Adventureland

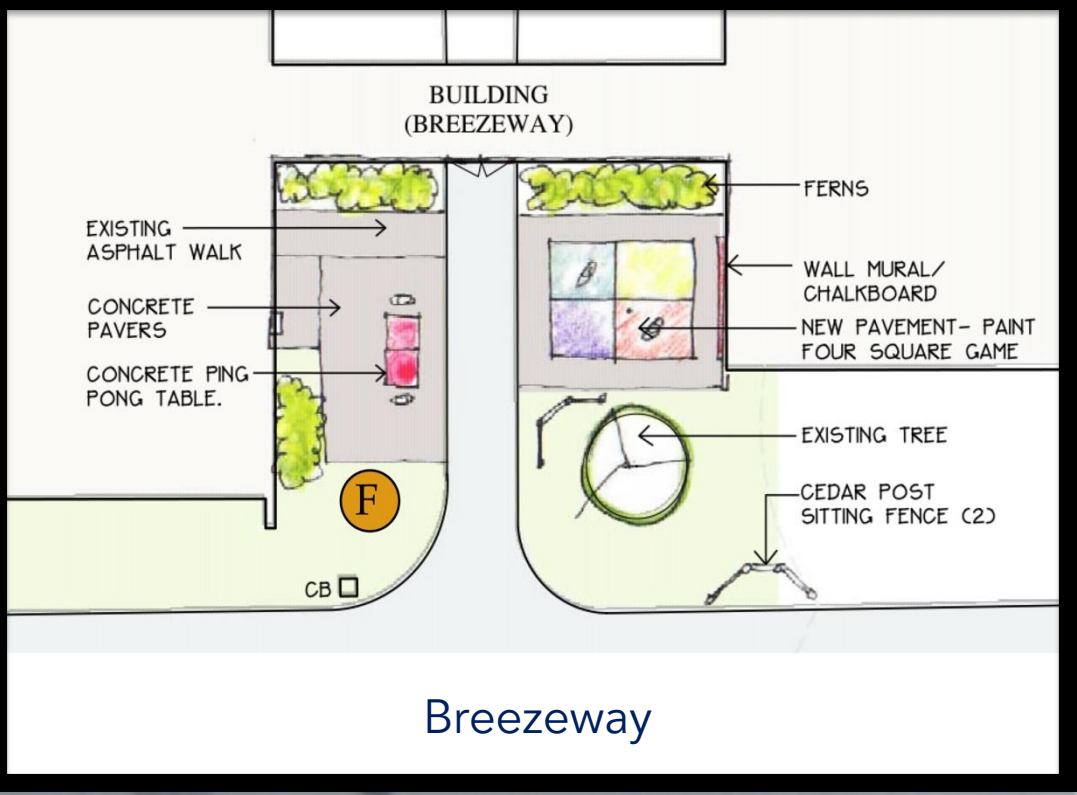






## Big Adventureland - Hillside Slide









## Operation Rebuild: Learn, Play, Grow Outside!

Our mission is to support the creation and maintenance of a new playground that encourages safe, accessible, open-ended play.